

DISPOSABLE STANDARD ISOLATION GOWN, SMS

- ✓ Liquid repellent
- ✓ Ergonomic fit
- ✓ Soft and comfortable
- ✓ Easy and simple to put on
- ✓ Breathable
- ✓ With Cuff



Product description

Protective gown against infective agents. With knitted cuff at the sleeves, ties at the neck and waist.

The gown is breathable and has an ergonomic fit, and therefore very comfortable to wear.

Isolation gowns are used to prevent body exposure and contamination in medical settings, clean areas, and industrial environments.

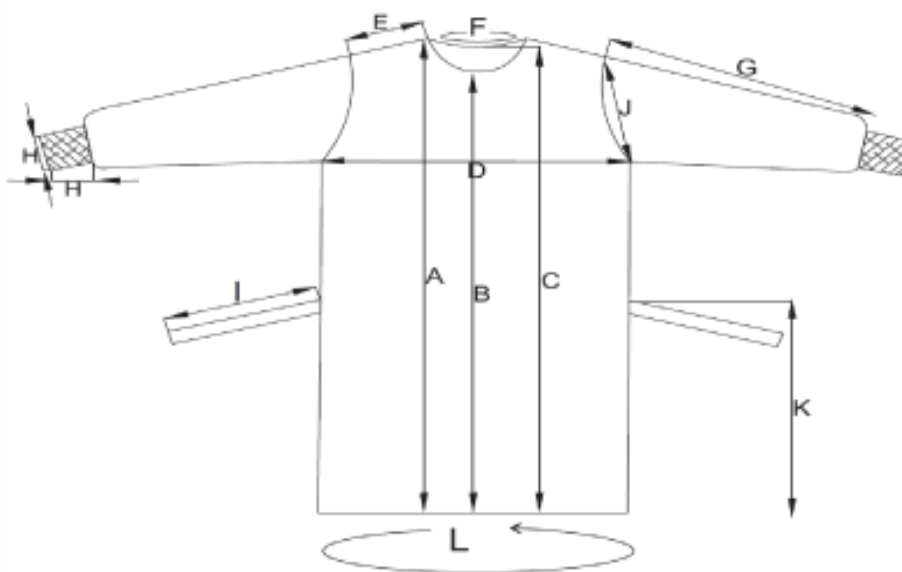
Specifications

Product name	Standard Isolation gown with cuff
Trademark	EMS MEDICAL
Sizes	Small, Medium, Large, X-Large, XX-Large, XXX-Large
Color	Blue, Orange, Green, Yellow, Red
Features	Liquid repellent Velcro at the Neck With tie at the waist With cuff at the sleeves
Quality	Antistatic Allergy friendly, Lint-free Puncture resistant
Material	SMS Non-woven - 35gr.
Certificates and test standards	CE
Classification	Classe I
Directives	MDR (EU) 2017/745
Sterilization method	Non Sterile
Durability	5 years from date of production
Storage	Store dry, at room temperature and out of direct sunligh.
Disposal of product	Can be disposed of with normal household waste. In case contamination is suspected, discard as clinical waste.
Disposal of packaging	Can be recycled or incinerated.
The content of the package	10 pcs. standard isolation gowns
Environment	- Transport carton 70% recycle - FSC approved packaging - Sustainability (ESG) - LDPE 80% recycle plastic



Packaging

Piece Pcs)/ Bag	Bag/ Carton (ctn)	Ctn/ Palle	Sizes	REF Nr.	Ctn measure-cm / kg
10 pcs.	20 bag.	16 ctn	Medium	11-041-02	60 x 26 x 34 / 10 kg
10 pcs.	20 bag.	16 ctn	Large	11-041-03	60 x 26 x 34 / 10 kg
10 pcs.	20 bag.	16 ctn	X-Large	11-041-04	60 x 26 x 34 / 10 kg
10 pcs.	20 bag.	16 ctn	XX-Large	11-041-05	60 x 26 x 34 / 10 kg



	S	M	L	XL	XXL	XXXL	TOL
A	120	124	128	133	140	150	± 2
B	112	116	120	125	132	142	± 2
C	117	121	125	130	137	147	± 2
D	65	67	69	72	74	76	± 2
E	17	18	19	20	21	22	± 2
F	60	62	64	66	68	70	± 2
G	57	58	59	60	63	65	± 2
H	10/7	10/7	10/7	10/7	10/7	10/7	± 2
I	60	62	64	66	68	70	± 2
K	70	74	78	82	86	90	± 2
L	145	147	149	152	160	170	± 2

ENGANGS STANDARD ISOLATIONSKITTEL, SMS

- ✓ Væskeafvisende
- ✓ Ergonomisk pasform
- ✓ Blød og komfortabel
- ✓ Nem og enkle at tage på
- ✓ Ånbar
- ✓ Med manchet



Produktbeskrivelse

Væskeafvisende kittel mod smitsomme stoffer. Med ærmemanchet, bindebånd i nakken og i taljen.
Kittlen er ånbar med ergonomisk pasform, og derfor meget komfortabel at bære.
Isolationskitler bruges til at forhindre kropsudsættelse og kontaminering i medicinske miljøer, rene områder og industrielle omgivelser.

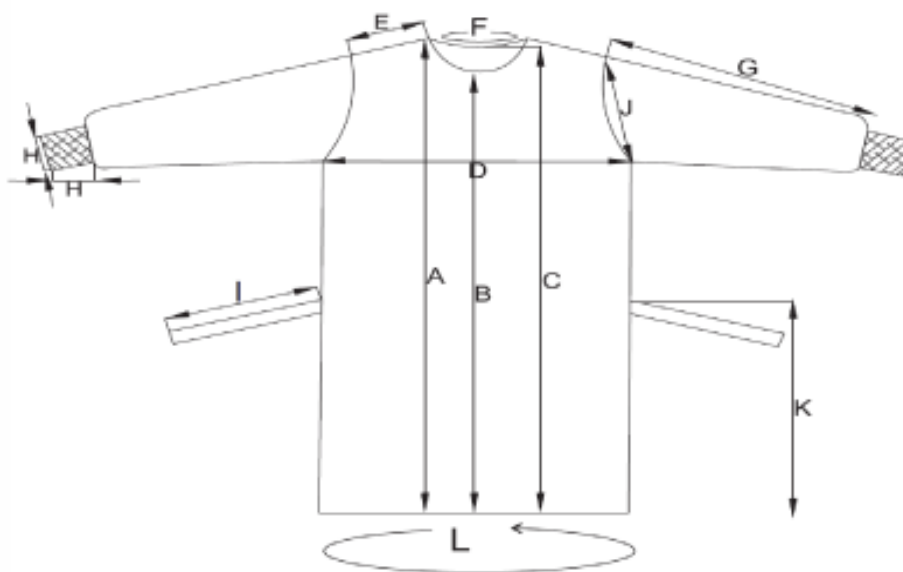
Specifikationer

Produktbetegnelse	Standard beskyttelseskittel med ærmemanchet
Varemærk	EMS MEDICAL
Størrelser	Small, Medium, Large, X-Large, XX-Large, XXX-Large
Farver	Blå, Orange, Grøn, Gul, Rød
Funktioner	Væskeafvisende Velcro i nakken Bindebånd i liv Med ærmemanchet
Kvalitet	Antistatiske Allergi venlig, Fnugfri Punktere modstandsdygtig
Material	SMS nonwoven - 35gr.
Certifikater	CE
Klassifikation	Klasse I
Direktiver	MDR (EU) 2017/745
Steriliseringsmetode	Usteril
Holdbarhed	5 år fra produktionsdato
Opbevaring	Opbevares tørt, ved stuetemperatur og ikke i direkte sollys
Bortskaffelse af produkt	Kan bortskaffes med almindeligt husholdningsaffald. Ved mistanke om kontaminering skal produktet kasseres som klinisk affald.
Bortskaffelse af emballage	Kan genbruges eller forbrændes.
Pakkens indhold	10 st. standard beskyttelseskittel
Miljø	- Kolti kasser og bølgepap består af minimum 70% genbrugspapir - FSC godkendt emballage - Bæredygtig (ESG) - LDPE 80% genanvendt plast



Forpakning

Piece Pcs)/ Bag	Bag/ Carton (ctn)	Ctn/ Palle	Sizes	REF Nr.	Ctn measure-cm / kg
10 pcs.	20 bag.	16 ctn	Medium	11-041-02	60 x 26 x 34 / 10 kg
10 pcs.	20 bag.	16 ctn	Large	11-041-03	60 x 26 x 34 / 10 kg
10 pcs.	20 bag.	16 ctn	X-Large	11-041-04	60 x 26 x 34 / 10 kg
10 pcs.	20 bag.	16 ctn	XX-Large	11-041-05	60 x 26 x 34 / 10 kg



	S	M	L	XL	XXL	XXXL	TOL
A	120	124	128	133	140	150	± 2
B	112	116	120	125	132	142	± 2
C	117	121	125	130	137	147	± 2
D	65	67	69	72	74	76	± 2
E	17	18	19	20	21	22	± 2
F	60	62	64	66	68	70	± 2
G	57	58	59	60	63	65	± 2
H	10/7	10/7	10/7	10/7	10/7	10/7	± 2
I	60	62	64	66	68	70	± 2
K	70	74	78	82	86	90	± 2
L	145	147	149	152	160	170	± 2