

DISPOSABLE SURGICAL GOWN FOR - TOUR/UROLOGY - GYNECOLOGY

- ✓ Soft and comfortable
- ✓ Color indication for correct selection
- ✓ Easy and simple to put on
- ✓ Ergonomic fit
- ✓ Max breathable

STERILE EO



Product description

Surgical gown made of Non-woven SMS 43gr. and PE 40gr.

The gown is breathable and has an ergonomic fit, and therefore very comfortable to wear.

Product Label is designed with color indication to minimize mistakes/waste on sizes and types during the daily stress.

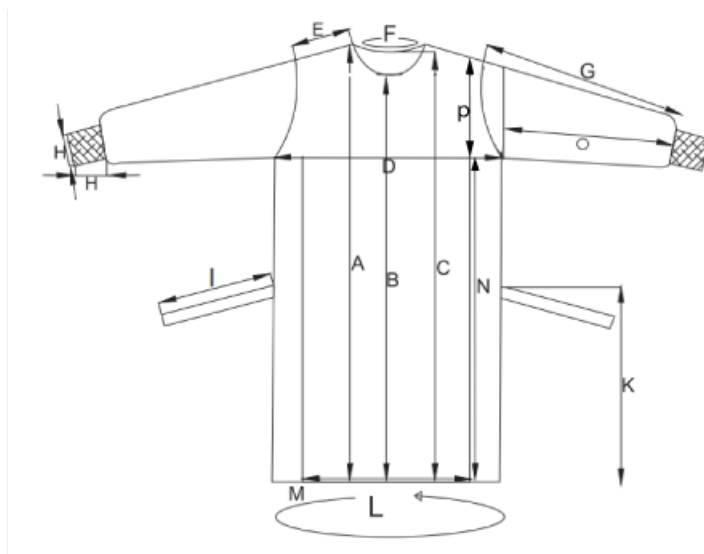
Specifications

Product name	Disposable surgical gown for TOUR/ Urology, Gynecology
Trademark	EMS MEDICAL
Sizes	Small, Medium, Large, X-Large, XX-Large, XXX-Large
Color	Blue
Features	TOUR/ Urology, Gynecology Belt with indication label Tie closure on back With Velcro at the neck
Material	Breathable Biflex, Non-woven SMS 43gr. + PE 40gr.
Certificates and test standards	EN13795-1:2019 CE; EN ISO 13485:2016; EN ISO 9001:2015; EN ISO 15223-1:2013
Quality	Antistatic Allergy friendly, Lint-free Liquid resistant Puncture resistant
Classification	Class Is
Directives	93/ 42/ EEC
Sterilization method	EO Sterile
Durability	5 years from date of production
Storage	Store dry, at room temperature and out of direct sunligh
Disposal of product	Can be disposed of with normal household waste. In case contamination is suspected, discard as clinical waste.
Disposal of packaging	Can be recycled or incinerated.
Packaging	PE/PAPER, Flat Sterile pack, Easy to open, Compact size for easy storage
The content of the package	1 piece reinforced surgical gown + 2 pcs. towels 40*40
Reinforcement	See the illustration on page 2
Environment	- Transport carton 70% recycle - FSC approved packaging - Sustainability (ESG) - LDPE 80% recycle plastic



Packaging

Package (pkg)	Pkg/ Box	Box/ Carton (Ctn)	Ctn/ Palle	Sizes	REF No.
1 pcs.	60 Pkg	1 Box	16 Ctn.	Medium	16-045-02
1 pcs.	60 Pkg	1 Box	16 Ctn.	Large	16-045-03
1 pcs.	60 Pkg	1 Box	16 Ctn.	X-Large	16-045-04
1 pcs.	60 Pkg	1 Box	16 Ctn.	XX-Large	16-045-05



	S	M	L	XL	XXL	XXXL	TOL
A	125	130	140	150	155	160	± 2
B	117	122	132	142	147	152	± 2
C	122	127	137	147	152	157	± 2
D	70	72	74	75	76	78	± 2
E	17	19	21	22	22	24	± 2
F	64	66	68	70	72	74	± 2
G	57	59	60	61	63	65	± 2
H	10/7	10/7	10/7	10/7	10/7	10/7	± 2
I	60	62	64	66	68	70	± 2
K	85	90	100	110	115	120	± 2
L	170	180	200	200	210	220	± 2
M	170	180	200	200	210	220	± 2
O	57	59	60	61	63	65	± 2
N	85	90	100	110	115	120	± 2
P	40	40	40	40	40	40	± 2