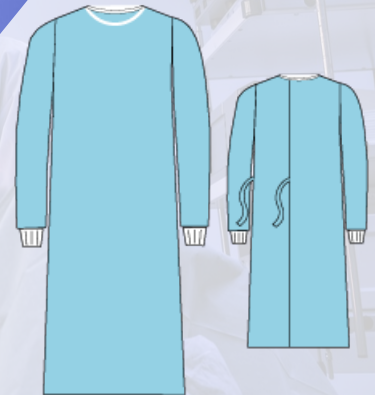


## DISPOSABLE STANDARD SURGICAL GOWN, SMS

- ✓ Liquid repelland
- ✓ Color indication for correct selection
- ✓ Soft and comfortable
- ✓ Easy and simple to put on
- ✓ Ergonomic fit
- ✓ 2 pcs. towels

**STERILE EO**



### Product description

Surgical gown made of liquid-repellent sms nonwoven material.

The gown is breathable and has an ergonomic fit, and therefore very comfortable to wear.

Product Label is designed with color indication to minimize mistakes/waste on sizes and types during the daily stress.

### Specifications

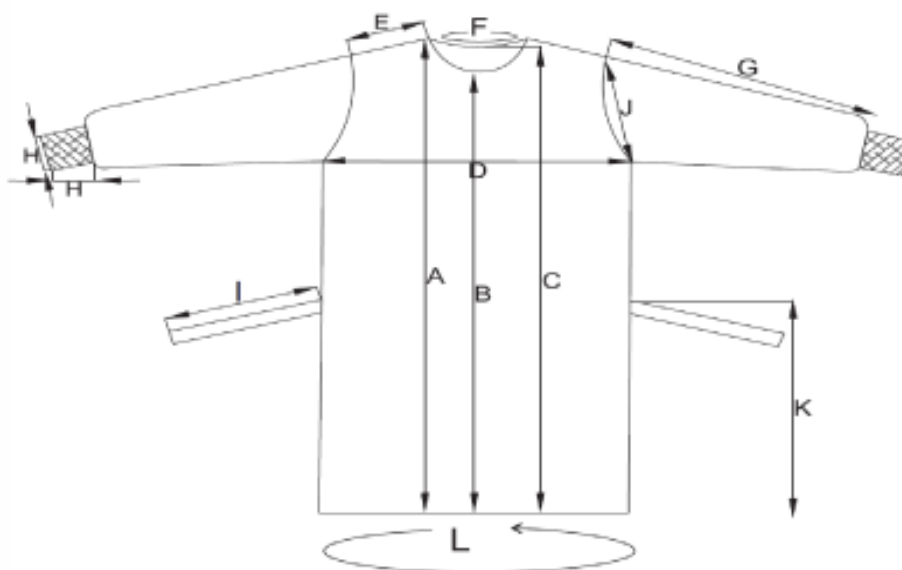
Product name	Disposable standard surgical gown
Trademark	EMS MEDICAL
Sizes	Small, Medium, Large, X-Large, XX-Large, XXX-Large
Color	Blue
Features	Liquid repellent Belt with indication label Tie closure on back With Velcro at the neck
Quality	Antistatic Allergy friendly, Lint-free Liquid repellent Puncture resistant
Material	SMS Non-woven - 43gr.
Certificates and test standards	EN13795-1:2019; CE; EN ISO 13485:2016; EN ISO 9001:2015; EN ISO 15223-1:2013
Classification	Class Is
Directives	93/ 42/ EEC
Sterilization method	EO Sterile
Durability	5 years from date of production
Storage	Store dry, at room temperature and out of direct sunligh
Disposal of product	Can be disposed of with normal household waste. In case contamination is suspected, discard as clinical waste.
Disposal of packaging	Can be recycled or incinerated.
Packaging	PE/PAPER, Flat Sterile pack, Easy to open, Compact size for easy storage
The content of the package	1 piece reinforced surgical gown + 2 pcs. towels 40*40
Environment	- Transport carton 70% recycle - FSC approved packaging - Sustainability (ESG) - LDPE 80% recycle plastic



## Packaging

Package (pkg)	Pkg/ Box	Box/ Carton (Ctn)	Ctn/ Palle	Sizes	REF No.
1 pcs.	60 Pkg	1 Box	16 Ctn.	Medium	16-041-02
1 pcs.	60 Pkg	1 Box	16 Ctn.	Large	16-041-03
1 pcs.	60 Pkg	1 Box	16 Ctn.	X-Large	16-041-04
1 pcs.	60 Pkg	1 Box	16 Ctn.	XX-Large	16-041-05

## STANDARD SURGICAL GOWN



	S	M	L	XL	XXL	XXXL	TOL
A	120	124	128	133	140	150	± 2
B	112	116	120	125	132	142	± 2
C	117	121	125	130	137	147	± 2
D	65	67	69	72	74	76	± 2
E	17	18	19	20	21	22	± 2
F	60	62	64	66	68	70	± 2
G	57	58	59	60	63	65	± 2
H	10/7	10/7	10/7	10/7	10/7	10/7	± 2
I	60	62	64	66	68	70	± 2
K	70	74	78	82	86	90	± 2
L	145	147	149	152	160	170	± 2