

## DISPOSABLE FULL - REINFORCED SURGICAL GOWN

- ✓ Full triplex reinforced
- ✓ Liquid resistant
- ✓ Color indication for correct selection
- ✓ Soft and comfortable
- ✓ Easy and simple to put on
- ✓ Ergonomic fit
- ✓ Maximum breathable

**STERILE EO**



### Product description

Full reinforced surgical gown made of 3 layers, Non-woven + PE + Non-woven.

The gown is breathable and has an ergonomic fit, and therefore very comfortable to wear.

Product Label is designed with color indication to minimize mistakes/waste on sizes and types during the daily stress.

### Specifications

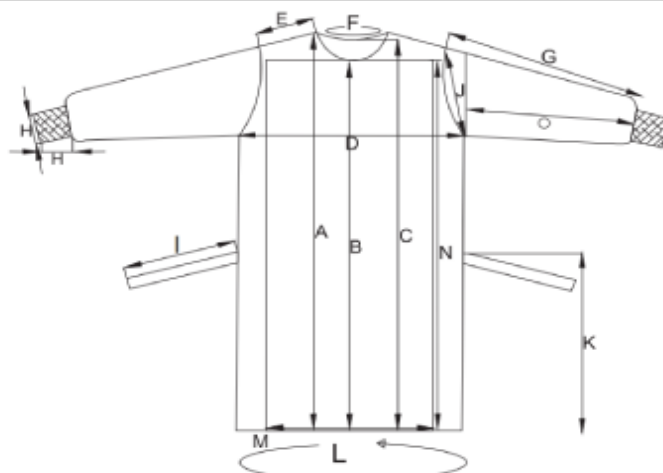
Product name	Disposable full reinforced surgical gown
Trademark	EMS MEDICAL
Sizes	Small, Medium, Large, X-Large, XX-Large, XXX-Large
Color	Blue
Features	Full liquid resistant Belt with indication label Tie closure on back With Velcro at the neck
Material	Breathable triplex 55gr. (Spunbond SMS + PE + Spunbond SMS)
Certificates and test standards	EN13795-1:2019 CE; EN ISO 13485:2016; EN ISO 9001:2015; EN ISO 15223-1:2013
Quality	Fully reinforced Antistatic Allergy friendly, Lint-free Puncture resistant
Classification	Class Is
Directives	93/ 42/ EEC
Sterilization method	EO Sterile
Durability	5 years from date of production
Storage	Store dry, at room temperature and out of direct sunlight
Disposal of product	Can be disposed of with normal household waste. In case contamination is suspected, discard as clinical waste.
Disposal of packaging	Can be recycled or incinerated.
Packing	PE/PAPER, Flat Sterile pack, Easy to open, Compact size for easy storage.
The content of the package	1 piece. full reinforced surgical gown
Reinforcement	See the illustration on page 2
Environment	- Transport carton 70% recycle - FSC approved packaging - Sustainability (ESG) - LDPE 80% recycle plastic



## Packaging

Package (pkg)	Pkg/Box	Box/ Carton (Ctn)	Ctn/ Palle	Sizes	REF No.
1 pcs.	60 Pkg	1 box	16 kl	Medium	16-043-02
1 pcs.	60 Pkg	1 box	16 kl	Large	16-043-03
1 pcs.	60 Pkg	1 boc	16 kl	X-Large	16-043-04
1 pcs.	60 Pkg	1 box	16 kl	XX-Large	16-043-05

## FULL REINFORCED SURGICAL GOWN



	S	M	L	XL	XXL	XXXL	TOL
A	120	124	128	133	140	150	± 2
B	112	116	120	125	132	142	± 2
C	117	121	125	130	137	147	± 2
D	65	67	69	72	74	76	± 2
E	17	18	19	20	21	22	± 2
F	60	62	64	66	68	70	± 2
G	57	58	59	60	63	65	± 2
H	10/7	10/7	10/7	10/7	10/7	10/7	± 2
I	60	62	64	66	68	70	± 2
K	70	74	78	82	86	90	± 2
L	145	147	149	152	160	170	± 2
M	145	147	149	152	160	170	± 2
N	120	124	128	133	140	150	± 2
O	57	58	59	60	63	65	± 2